

## Making religion accessible to deaf, hard of hearing

In the ongoing effort to make life in a hearing world accessible to kids who are deaf or hard of hearing, parents who value religion must find a way to make worship services accessible.

Thankfully, a host of religious organizations in the Twin Cities has opened their doors to our kids by offering services that are either interpreted or conducted in an accessible language. Several churches, like Dakota Hills and Bread of Life, have mostly deaf congregations and deaf pastors who sign services in ASL. Many other churches offer an ASL-interpreted service. And, one church provides Cued Speech transliteration for its Sunday service.

Diamond Lake Lutheran Church was quite possibly the first church in the nation to bring in Cue transliterators for Sunday services. Parents Keith and Katherine Burns-Christenson requested Cue transliterating to help their daughter participate in church. Last year, the Burns-Christensons, with overwhelming support from their church, started having a cued speech transliterator at religious services one time per month. This past September, the church supported providing a transliterator every Sunday, including during Sunday School.

"This has been a terrific journey for the church," said Pastor Mark Orvick. "When I came to DLLC (Diamond Lake Lutheran Church) three years ago, a

**See Page 4 for a list of churches in the Twin Cities that provide interpreted Sunday services. The list also includes churches with services conducted in ASL.**

strong characteristic of the church was the belief that the church should be inviting *all* people to a life in Christ," he explained. "We were not deliberately ignoring the needs. But we needed to work on how to be more inviting."

Macalester-Plymouth United Church shares that philosophy. The church provides ASL interpreters at its 10:30 a.m. service every Sunday.

"Even before we were approached by members of the deaf/hard of hearing community, the church had established resources to facilitate involving people with mobility and vision challenges in our worship," said Irene Harris, the church's coordinator for interpreters. "Coming from this background, the congregation embraced the task of welcoming the deaf/hard of hearing community."

Macalester-Plymouth goes a step further to make the church a welcoming environment for people who sign.

"We have provided workshops on ASL during church retreats, and regularly teach elements of sign language in the course of our weekly worship," Irene explained.

The church has a "Deaf Involvement Work Team" that coordinates services related to the deaf or hard of hearing members. The team has set up several educational opportunities, including a social hour after worship to teach sign language informally. The team also is expanding ministry for deaf/hard of hearing children and youth.

"Rev. Tom Ewald, who has just joined us this year, is taking on much of the responsibility for youth ministry and is learning ASL so that he can provide more effective ministry in that area," Irene added.

Reaching teens who are deaf or

hard of hearing is the special ministry of Community of Hope's DeafTeen Quest. Community of Hope started six years ago as a consortium of various Christian churches serving the Deaf community. DeafTeen Quest serves as a Youth Group for Christian deaf and hard of hearing teens.

"Most Deaf churches have few or no Deaf teens attending," explained Laurie Johnson, Director for Community of Hope and Area Coordinator for DeafTeen Quest. "Until just a couple years ago, I knew of no Deaf churches with a Deaf youth group. Some hearing churches have Deaf teens attending, but usually it's a small number. With the small number, and the Deaf teens having to communicate with hearing teens and adults through interpreters, they often don't make good connections."

DeafTeen Quest offers teens the chance to gather with signing peers, explore their faith and meet Christian adult role models, Laurie added. The group meets at various sites across the Twin Cities each month.

"In the near future, we hope to establish bi-weekly small groups that will meet on various nights and at various locations," Laurie said. "The teens will be able to choose a night and location that would best suit them."

(See Page 2 for details on DeafTeen Quest's January retreat.)

In the Jewish faith, services often are conducted in Hebrew, making interpretation in ASL virtually impossible. There don't appear to be any synagogues in the Twin Cities that offer special services for members who are deaf or hard of hearing. Still, one Minneapolis family has found a way to keep their children involved in their faith.

The Waxmans have a 14-year-old daughter who is profoundly deaf and uses a cochlear implant. She was raised Oral/Aural, using speech and listening to communicate. She has learned to read Hebrew and can follow along in the prayer book during the service as well as any other 14-year-old, her mother said.

## What's Happening Around Town

- Saturday, Dec. 10** **Community of Hope hosts a Christmas Potluck Dessert Social** from 1 to 3 p.m. at Bread of Life Lutheran Church for the Deaf, 2901 38th Ave. S., Minneapolis. Bring a dessert to share. Beverages are provided. For more information, call 651-455-0093 Voice/TTY or e-mail COHDeafOutreach@aol.com.
- Saturday, Dec. 10** **A Holiday Open House from 10 a.m. to 5 p.m.** at Wood-Lake Lutheran Church, 7525 Oliver Ave. S., Richfield, features Deaf Consultants for a variety of companies including Discovery Toys, Stampin' Up!, Tupperware, Creative Memories, and the Pampered Chef. For information, contact Anna at sweetfeather@tmail.com.
- Saturday, Dec. 10** **Santa cues with kids** at a party sponsored by the Cued Speech Association of Minnesota from 1 to 3 p.m. at Diamond Lake Lutheran Church, 5760 Portland Ave. in Minneapolis. Families also can make gingerbread houses. RSVP to Katherine Burns-Christenson at 952-929-3965 or e-mail kbc29@aol.com.
- Tuesday, Dec. 13** **Signing Santa** comes to Burnsville Center from 6 to 9 p.m..
- Sunday, Jan. 1** **The tour of "Villa America: American Moderns, 1900-1950"** at The Minneapolis Institute of Arts is ASL-interpreted beginning at 2 p.m. on the third floor in the Bell Decorative Arts Court. For more information, call Visitor and Member Services at 612-870-3131 (v) or 612-870-3132 (tty).
- Friday, Jan. 6** **Swim Night for the Deaf and Hard of Hearing Community** runs from 7:30 to 9:30 p.m. at Oxford Pool, 1079 Iglehart, St. Paul. \$3 kids/\$4 adults. For more information, contact Mary Livingston at St. Paul Parks and Recreation, 651-266-6366 (v) or 651-266-6378 (tty).
- Saturday, Jan. 7** The St. Paul Public Library presents **Deaf Storytime** with stories in ASL and voice interpretation at 10:30 a.m. at the Merriam Park Branch Library, 1831 Marshall Ave. Assistive listening devices are available. For details, call 651-642-0385 (v) or 651-298-4184 (tty).
- Jan. 13-15** **Community of Hope sponsors a retreat for teens** (ages 13-21) at Camp Courage in Maple Lake. Cost is \$70 and includes lodging, meals, activities, and transportation. For registration information, contact Laurie Johnson at 651-455-0093 or COHDeafOutreach@aol.com.
- Tuesday, Jan. 24** **"Record Keeping" is the topic for a free workshop** presented by PACER, the Family Support Connection, Metro Deaf School and Minnesota North Star Academy. The workshop runs from 7 to 9 p.m. at Metro Deaf School, 265 W. Lafayette Rd. S., St. Paul. To register, contact 651-2224-3995 (v), 651-222-0984 (tty) or contact.us@metrodeafschool.org.
- Sunday, Jan. 29** **Join us for our annual party at the Roller Garden in St. Louis Park.** See the flyer for details or contact us at 651-265-2435 (v), 651-265-2379 (tty) or e-mail fsc@lifetrackresources.org.



## ASL-Interpreted Performances

### **Seussical**

Sunday, Dec. 18, 2 p.m.  
Half-price tickets: 612-623-9080.  
Howard Conn Fine Arts Center,  
1900 Nicollet Ave., Mpls.;  
www.youthperformanceco.com.

### **Radio City Christmas Spectacular**

Sunday, Dec. 18, 2 p.m.  
Tickets: \$20-70  
Request ASL: accessible@orpheum.com.  
Historic Orpheum Theatre,  
910 Hennepin Ave.S., Mpls.; 612-373-  
5639, -5655(tty);  
www.hennepintheatredistrict.com.

### **The Crucible**

Friday, Jan. 13, 7:30 p.m.  
Tickets: \$7/adult, \$5/student & seniors  
Apple Valley High School, 14450 Hayes  
Road, 952-431-8203, box office: 952-  
8208 or 952-431-8737 (TTY).

### **Man of La Mancha**

Friday, Jan. 20, 8 p.m.  
(request ASL by 1/6)  
Tickets: Reduced to \$28; 612-340-1725.  
Southern Theater, 1420 Washington Ave.  
S., Mpls.; www.southerntheater.org.

### **A Tale of Two Cities**

Saturday, Jan. 28, 7:30 p.m.  
Tickets: Reduced to half-price.  
Park Square Theatre, 408 St. Peter St.,  
St. Paul; 651-291-7005;  
www.parksquaretheatre.org.

**FOCUS** is published by the Family Support Connection at Lifetrack Resources. 709 University Avenue West St. Paul, MN 55104-4804 651-265-2435(v); 651-265-2379(tty) Toll-free: 1-866-DHOHKID (346-4543) Toll-free TTY: 1-866-857-2379 fsc@lifetrackresources.org www.familysupportconnection.org

Our mission is to build better lives for children who are deaf or hard of hearing by providing parent-to-parent support.

Newsletter Editor: Audrey Alwell

Information in this newsletter about events, services, or other organizations does not imply endorsement by the Family Support Connection or Lifetrack Resources.

© 2005 Lifetrack Resources

## In Your Corner

By Candace Lindow-Davies, Family Support Coordinator

We hope everyone is enjoying the winter weather we have been having. I know my kids are thrilled to see the snow come down, and jump off the bus to start playing in the drifts before being called in for dinner. Ah, to be a kid again....

We also hope that you enjoy our topic for this month. When we were planning out the subjects we would cover in future issues, we wanted to connect the December newsletter somehow to the winter season and all of its beautiful celebrations. After our last edition, featuring information about how your child can gain access to sports, theater, arts, etc. through the American with Disabilities Act and other laws, we thought of "spiritual access." In other words, we wanted to highlight some of the good work being done in our spiritual communities to include our kids—even though the ADA doesn't actually apply to these religious groups. The people in these spiritual communities are welcoming our children who are deaf and hard of hearing because they feel it is the right thing to do.

If spirituality is a part of your family's life, we hope that your child is able to fully participate. Or if you're looking for access at your local house of worship, you may be inspired from our cover story to advocate so your child is able to participate. Parents and individuals with hearing loss have paved many roads for the rest of us. We all can learn and benefit from their successes.

—We hope to see many of you at the educational workshop coming up on Jan. 24. And, don't forget to join us Jan. 29 for roller skating!—

Have a lovely, healthy and safe holiday season.

## New website focuses on deaf education

A new website created in collaboration with Hands & Voices focuses on the National Deaf Education Project, a national effort to improve educational outcomes for children who are deaf or hard of hearing.

The site, [www.ndepnow.org](http://www.ndepnow.org), is also a repository for state initiatives on deaf education reform, including examples of The Deaf Child's Bill of Rights as passed in several states, the Statement of Principle, links to activities throughout the nation including The National Agenda, and a variety of other information regarding the project. Notes from the first National Summit on Collaborative Educational Programming, held in Atlanta on April 2005, are posted. Planning for the 2006 Deaf Education Summit is underway. This conference will be held in Riverside, California on May 16-17, 2006.

## FSC seeks parents to apply to be mentors

The Family Support Connection is looking for applicants for six new Out-State Parent Mentor positions.

The jobs will start in January. Mentors are parents of children who are deaf or hard of hearing who give unbiased support to families around the state. The specific regions are outlined on the website for the state's Deaf and Hard of Hearing Services Division at [www.dhs.state.mn.us/main/groups/disabilities/documents/pub/DHS\\_id\\_002702.hcsp](http://www.dhs.state.mn.us/main/groups/disabilities/documents/pub/DHS_id_002702.hcsp).

Applicants also should be willing to learn about newborn hearing screening, changes in technology, and the choices parents face. The positions require periodic paid travel to the Twin Cities and around the specified region for trainings and meetings. The jobs also require the development of on-going local funding for each position. Mentors will work about 15 to 20 hours a month.

To apply to become an Out-State Parent Mentor, contact the Family Support Connection at 651-265-2435(v), 651-265-2379(tty), toll-free: 1-866-DHOHKID (346-4543), toll-free TTY: 1-866-857-2379, or e-mail: [fsc@lifetrackresources.org](mailto:fsc@lifetrackresources.org).

## SHHH becomes Hearing Loss Association

Self Help for Hard of Hearing (SHHH) is changing its name to the Hearing Loss Association of America.

SHHH, founded in 1979 by the late Howard "Rocky" Stone, serves people with hearing loss through information, education, advocacy and support. The new name, which will become the group's legal name in March, has been chosen to reach a larger population with hearing loss. The national headquarters is in Bethesda, Maryland. SHHH publishes a bimonthly magazine, *Hearing Loss*. The national group's website is [www.hearingloss.org](http://www.hearingloss.org).

SHHH has a local chapter in the Twin Cities that has monthly meetings at the Courage Center in Golden Valley. The chapter also publishes a periodic newsletter. For more information about the local chapter, see [www.deafvision.net/shhhmn1](http://www.deafvision.net/shhhmn1).

**The Family Support Connection along with other groups in the state that serve families that have children who are deaf or hard of hearing are surveying parents to see what needs still need to be met. To complete a survey online, see [http://survey.dhs.state.mn.us/snap/dhhsd/dhhsd\\_survey.htm](http://survey.dhs.state.mn.us/snap/dhhsd/dhhsd_survey.htm). Or contact us for a copy by mail.**

## Churches with accessible services:

All God's Children Metropolitan Community Church  
3100 Park Ave. S., Minneapolis  
612-824-2673  
Interpreted Sunday Worship: 10 a.m.

Bloomington Living Hope Lutheran Church (Two Locations)  
www.bloomingtonlutheran.org  
Living Hope Lutheran  
8600 Horizon Dr S., Shakopee  
952-445-1785 V/T  
Bloomington Lutheran  
9350 Portland Ave S.  
952-888-2475  
Interpreted Bible Study Sunday: 8:45 a.m.  
Interpreted Services Sunday: 10 a.m.  
Assistive Listen Devices Available

Bread Of Life Lutheran Church For The Deaf (Elca)  
2901 38th Ave. S., Minneapolis  
612-721-4292 (V), 612-721-2521 (tty)  
Worship: 10:30 a.m.

Calvary United Pentecostal Church 8800 Nicollet Ave. S., Bloomington  
952-888-0028 (v)  
Interpreted Worship: 10 a.m. & 6 p.m.

Catholic Deaf Community At Our Lady Of Mount Carmel Church  
701 Fillmore St. NE, Minneapolis  
612-378-1344 (tty), 612-623-4019 (V)  
www.olmcmpls.org  
Sunday Mass: 8 & 10 a.m. (sign/voice)

Archdiocesan Office for the Deaf  
www.archspm.org/Deaf (Interpreted Masses throughout the Archdiocese)

Celebration Ministry Center  
16655 Kenyon Ave., Lakeville  
952-898-7200 (v)  
www.celebrationchurch.net  
Interpreted Worship: Sunday 11 a.m.

Church Of The Open Door  
9060 Zanzibar Lane N., Maple Grove  
763-416-5887 (v)  
www.thedoor.org  
Interpreted Worship: Sunday 11 a.m.

Dakota Hills Deaf Church (Mt. Olivet)  
14201 Cedar Ave. S, Apple Valley  
651-423-4238 (TTY/FAX)  
Sunday School: 9:15 a.m.  
Worship Services: 10:45 a.m.

Diamond Lake Lutheran Church  
5760 Portland Ave. S., Minneapolis  
612-866-2579 www.dllc.org  
Cue-Transliterated Worship: Sunday 11 a.m.

Friendship Church  
12800 Marystown Road, Shakopee  
952-447-8282 (v)  
www.friendship-church.org  
Interpreted Worship: 9 a.m.

Grace Church (Deaf)  
9301 Eden Prairie Road, Eden Prairie  
612-926-1884 (V)  
Worship Service: Wed. 7 p.m.

Hosanna! Lutheran Church  
9600 163rd St. W., Lakeville  
952-435-3332 (v), 952-898-9257 (tty)  
www.hosannalc.org  
Interpreted Worship: Sunday 11 a.m.

Macalester Plymouth United Church  
1658 Lincoln Ave., St. Paul  
www.macalester-plymouth.org  
651-698-8871  
Interpreted Worship: Sunday 10:30 a.m.

Pleasant View Deaf Assembly  
7901 Pleasant View, Spring Lake Park  
612-784-1049 (tty)  
Sunday Worship Service: 11 a.m.

Prince Of Peace Lutheran Church For The Deaf (Trinity of Lake Johanna)  
3245 New Brighton Road, Arden Hills  
651-633-2402 (v), 651-633-6778 (tty)  
Worship: Sunday 11 a.m.

Plymouth Presbyterian Church  
3755 Dunkirk Lane N, Plymouth  
763-559-2946 (V)  
www.plymouthpc.org  
Interpreted Worship: Sunday 9:30 a.m.

Shepherd Of The Valley Lutheran  
14107 Hudson Road S., Afton  
651-436-8248 (v)  
www.shepherd-lutheran.org  
Interpreted Worship: Sunday 9 a.m.

Twin Cities Deaf Assembly Of God  
536 Snelling Ave S., Highland Park  
651-698-4614(tty)  
Sunday Worship: 10 a.m.  
Deaf Culture Youth Service: Wed. 7 p.m.

Woodbury United Methodist Church  
7465 Steepleview Rd., Woodbury  
651-738-0305 (v)  
www.woodburyumc.org  
Interpreted Worship: Sunday 10 & 11:15

Woodlake Lutheran Church  
7525 Oliver Ave. S., Richfield  
612-866-8449  
www.woodlakechurch.org  
Interpreted Worship: Sunday 10 a.m.

## School tries variety of fundraising activities

Metro Deaf School (MDS) is working on a couple of fundraising opportunities to support school programs.

Until **Dec. 9** (this Friday), members of the Parent-Teacher Group are selling Blue Sky Guides with coupons for discounts at 250 local venues. The coupons include savings at food stores such as Whole Foods Market, restaurants such as Cafe Brenda and the Birchwood, museums such as the Children's Museum, and many stores including Bachman's, Garden of Eden, One Upon a Child, Ragstock, Wet Paint, REI and more. The discounts are good through December 2006. The coupon books cost \$20, and 50% goes to MDS. For more information, contact Paula Werner at [Paula@fraser.org](mailto:Paula@fraser.org).

MDS also is involved in an ongoing fundraiser called Shop-4-Zero. It is an online shopping program that gives shoppers 3% cash back and another 2% to MDS for online purchases. Shoppers register at <http://mds.shop4zero.org> and shop at over 700 online stores. For more details, contact Nan Martin at 651-224-3995 or e-mail [nmartin@metrodeafschoool.org](mailto:nmartin@metrodeafschoool.org).

## Ski lessons offered; registration ends soon

The deadline to register for the learn-to-ski program sponsored by the Minnesota Ski Council is next Friday, Dec. 16.

The council is offering five weekly beginner to intermediate lessons for children (ages 7+) and adults who are deaf or hard of hearing. The lessons will be on Sunday afternoons starting in January at Hyland Hills in Bloomington. The cost for the 5 lessons is \$60 and includes lift tickets and equipment rental. If rental isn't needed cost is \$50.

Lessons are taught by volunteer instructors on a one-to-one basis when possible. ASL interpreters will be available, but may not be provided continuously throughout the lesson.

To request a registration form, contact Bob Barrett at 763-323-7644 or 763-639-3912.



## International conference focuses on Cued Speech

The National Cued Speech Association will host an international conference July 20-23 in Towson, Maryland.

2006 is the 40th anniversary of Cued Speech, a communication system developed by the late Dr. R. Orin Cornett. The conference will bring together both the innovators in the field of Cued Speech and the families who use it.

Conference registration begins Feb. 1, with an Early Bird discount of \$25 until March 1. Nominations also are being accepted for leadership awards. For details, see [www.cuedspeech.org](http://www.cuedspeech.org).

## NAD lobbies Congress for better captioning, telecommunication access

The National Association of the Deaf (NAD) is asking people to send in comments about the need for good captioning. There's a page for comments at [www.nad.org/captioningaction](http://www.nad.org/captioningaction).

The NAD also is lobbying Congress now to update the Telecommunications Act of 1996, which, in this age of rapidly advancing technologies, has become out of date. When the law was written, most people who are deaf or hard of hearing communicated by TTY. Since then, e-mail, t-mail, Instant Messaging (IM), high-speed Internet and video relay services have evolved. In addition, new cell phones and devices such as iPods are capable of showing movies—without captions.

The Energy and Commerce Committee of the U.S. House of Representatives is working on a bill this month. The NAD hopes to get public support for key issues in the draft of the House bill that will make telecommunications more accessible for people who are deaf or hard of hearing.

Among the proposed changes to the law is wording that would require the same rules that now apply to broadcast and cable-cast programming to apply to video streaming on the Internet, phones and devices like iPods.

To participate in a short survey that will be shared with Representatives working on the new legislation, see [www.nad.org/BroadbandBillAction](http://www.nad.org/BroadbandBillAction) and follow the instructions.



### A Little Grin

By Katherine Burns-Christenson

*The Burns-Christenson family attends Diamond Lake Lutheran Church where Sunday services are now transliterated in Cued Speech.*

We were in church recently and my daughter, Paige, accompanied me to communion. In our church, it's customary for a child who doesn't take communion to receive a blessing. In the past, I would do my best to jump in her line of view and cue what the pastor was saying. On this day, however, we had our transliterator, and she stepped in next to the pastor to cue for Paige. As we turned to make our way back to the pew, Paige said in a louder voice than I would have liked, "That was AWESOME! That was so much better. I finally got that!"

## Several captioned movies coming to theaters

Several open-captioned movies for families will be showing this month.

The Regal Brooklyn Center Stadium 20 is showing "Harry Potter and the Goblet of Fire" now through Dec. 12.

Kerasotes Theatres will show "Chicken Little" in Coon Rapids Dec. 19 and 20 and in Inver Grove Heights Dec. 21 and 22. The theaters will have "Yours, Mine & Ours" in Coon Rapids Jan. 9 and 10 and Inver Grove Heights Jan. 11 and 12.

Marcus Theatres in Oakdale will show "The Chronicles of Narnia" Dec. 23 through the 25. "King Kong" will be there Dec. 30 through Jan. 1. "Harry Potter and the Goblet of Fire," which was previously scheduled for this month, has been moved to Jan. 6 through 8.

## New technology improves quality of phone calls

New technology is making it easier than ever for people who have a hearing loss to hear conversations on the telephone.

Clarity, a supplier of communications products for the deaf and hard of hearing community, last week introduced Digital Clarity Power™ (DCP), a digital signal processing technology that eliminates unwanted background noise. Up until this point, amplified telephones have been analog-based, which means they transmit all sounds broadcast into a receiver, including line static and other distracting noises. Some phones have used digital signal processing and digital spread spectrum technology, but not in the same way that DCP does. A computer chip inside a DCP-powered phone runs various algorithms to improve listening conditions. It makes soft sounds audible, loud sounds bearable and eliminates background static or noises like air conditioning.

Digital signal processing technology was first used in hearing aids in 1987, but the technology took nearly a decade to become the standard in hearing aids. Clarity is the first telephone supplier to incorporate this patent-pending technology into its products. The company now has two DCP phones on the market: the corded C2210 and the cordless C4205. For information on Clarity phones, call 1-800-552-3368 or visit [www.clarity-products.com](http://www.clarity-products.com).

**A new museum on sign language and Deaf culture recently opened in Olathe, Kansas. The William J. Marra Museum of Deaf Culture is located at the Deaf Cultural Center, 455 E. Park St. The museum contains more than 2,000 pictures, 700 relics and 500 books related to deaf history and culture.**



## Off the Shelf

By Robin Coninx, FSC Specialist

Our Family Support Connection library has a series of videotapes on religious topics that was donated to us from Parkview United Church of Christ. Most are stories from the bible in ASL. One of the videos, "Music in the church...who needs it?" by Mark Mitchum is about music in churches. This instructional video includes topics about translating English into ASL, facial expressions, rhythm, and guidelines for a deaf choir.

Searching the Internet, I found thousands of results for "religious access for the deaf and hard of hearing." I thought the one from About.com had a nice variety. The address is: <http://deafness.about.com/od/religion>. Although it seems that most of the information is directed at people who use sign language.

Thank you for your patience during our inventory time in the library. Our library is once again open to your requests for resources. You can contact us at: [fsc@familysupportconnection.org](mailto:fsc@familysupportconnection.org) or call 651-265-2435 (v), -2379 (tty).

**A wall calendar for 2006 features new signs to learn each month. "Cali and the Animal Kingdom" has pictures in ASL along with the names of the signs in English and Spanish. The calendar sells for \$12.99, with discounts for multiple orders. It also is available as a fundraising opportunity. See [www.coloroflanguage.com](http://www.coloroflanguage.com).**

## New device allows wireless connection to electronics

Starkey Laboratories has developed a small module that attaches to a behind-the-ear hearing aid for wireless access to Bluetooth devices such as cell phones, computers and entertainment systems.

ELI (Ear-Level Instrument) is a miniature Bluetooth device that offers wireless communication between hearing aid wearers and an assortment of modern Bluetooth signal sources. Bluetooth is a short-range, wireless, digital communication standard. Devices with Bluetooth technology can carry either audio information or data from one device to another. There is an intentional limit on the range of transmission — the most common version has a range of 33 feet — which helps to avoid interference among nearby devices.

For wireless phones, ELI eliminates the problems hearing aid users typically encounter such as acoustic feedback, insufficient volume, noise from other electrical sources and mobile phone interference. The device costs about \$200. It connects to behind-the-ear hearing aids that use a Europlug standard direct audio input (DAI) connector, which has become standard in hearing aids in the last couple of years. For older hearing aids that contain a telecoil, ELI can be attached to an Adapted Neck Loop. The adapter costs about \$100. ELI runs on an internal rechargeable battery so it does not drain current from the hearing aid battery.

ELI is only available for use with hearing aids, not cochlear implants. For more information about ELI, see [www.elihearing.com](http://www.elihearing.com).

## Invention lets deaf feel variations in music

An English man has invented a device that allows people to "feel" the sound of music with their fingertips.

Shane Kerwin, a product design graduate at Brunel University in London, created "Vibrato" to help deaf children in music classes feel what their classmates can hear. The device, which connects to a speaker, has five finger pads that allow the user to feel the difference between notes, rhythms and instruments by resting the fingertips on the pads.

Vibrato also allows users to create their own music. By connecting the speaker to a computer, budding deaf composers and musicians can explore a variety of instruments, rhythms, pitches and volumes.

A percussionist himself, Kerwin saw the need for his invention when he was a classroom assistant at a school that had hearing and deaf children. He hopes the device will encourage deaf children to take an interest in music.

For a look at the device, see [www.cnn.com/2005/TECH/10/26/vibrato.speaker](http://www.cnn.com/2005/TECH/10/26/vibrato.speaker).

## New technology makes captioning live events possible

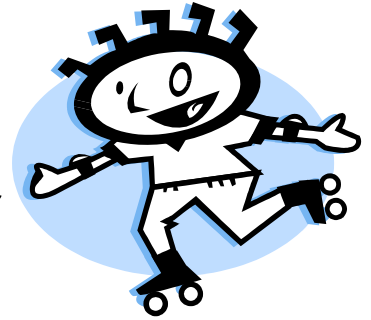
It's coming... the day when live sporting events, theater and other public forums will be routinely captioned is nearly here. Two separate companies have developed hand-held captioning devices for public venues.

Stephen Foster's new company, iMobile Access Technologies (iMAT), is developing technology that would provide real-time text broadcasts for movie theaters, sports and entertainment venues. Foster, who is deaf, also is applying his technology to radio broadcasts, opening up an entirely new market. iMAT uses existing software and captioning providers to caption events and send the text signal to patrons who have an iMAT hand-held device.

Electrical and optical engineer Leanne West has spent five years developing a similar product. Her device relies on wireless networks that are already installed in many stadiums and theaters. Captions would be transmitted via the wireless networks to personal digital assistants (PDAs) loaded with captioning software. Captioning also will let fans receive the stats on players right after a big play. West's technology uses a Windows platform and will work with any Windows PDA.

Both technologies use captioning services to create the captions. Those services plus the investment in software and hardware mean that captioning of public events will be an expensive endeavor. So, even though the technology is available, it might be a while before captioning is commonplace.

# ROLLER GARDEN ROLLER-SKATING EVENT!



For Families with *Children who are Deaf or Hard of Hearing.*  
(Parents are encouraged to join their children for a fun family event.)

**Sunday, January 29, 2006**

**4:30 - 6:30 p.m.**

(We have exclusive use of the rink!)

**Cost: FREE!**

(Donations are welcome at the door)

You will also receive a coupon for a  
**FREE Hotdog, bag of chips and pop!!!**

The Roller Rink will be **closed to the general public** so this is a great way to get out there to test your skating feet, socialize with all of your friends and meet new friends!! It is a lot of fun for the entire family.

**Directions:**

From the North: Take Hwy 100 south to Minnetonka Blvd. Exit. At the end of the exit (stop sign), take a left. Go straight through the lights. Roller Gardens is on the right side of the road next to Marathon Gas station. (You will see a dinosaur on the roof of the Roller Rink)

From the South: Take Hwy 100 North to Minnetonka Blvd. Exit. At the end of the exit, take a right. Go over the bridge. Take a left at the lights on Lake Street. Roller Gardens is on the right side of the road next to Marathon Gas Station. (You will see a dinosaur on the roof of the Roller Rink)

Questions on Directions?

Call Roller Gardens at 952-929-5518  
5622 W. Lake Street  
St. Louis Park. MN 55416

Questions on the event?

Call Family Support Connection at 651-265-2435(v),  
651-265-2379 (TTY) or e-mail: [fsc@lifetrackresources.org](mailto:fsc@lifetrackresources.org)

RVSP's appreciated.

